

Instruction Sheet

318-865-1711
800-551-8633

WWW.MERCOPRODUCTS.COM

EMAIL: MERCOSERVICE@WELBILT.COM

Follow these instructions to add a rear touch screen controller to the MercoMax 2x2 MHC holding cabinets.

Subject: 8263781 Adding a Rear UX Touch Screen Controller Kit Instructions

Models affected: MercoMax 2x2 and 2x2L MHC Holding Cabinets

5/27/2026

1. Power on the unit.
2. Press the Home icon (see Figure 1).
3. Press the Settings "Gear" icon (see Figure 2).
4. Press and hold the "easy ToUCH" button (see Figure 3) until the screen displays **Reset Configuration** (see Figure 4).
5. Press the green check mark (see Figure 4).
6. Once the unit displays Unit configuration reset successful

In This Kit		
Part #	Description	Qty
8076760	CONTROL, UX CUI	1
130426838	SD CARD, A7 MHC	1
130296322	HARNESS, UX UI CABLE ADAPTER	1
8076535	COUPLER-COMMON TOUCHSCREEN	1
130401843	SCREW, M3 X 10 THREAD FORMING	8
8076181	CABLE, MHC COMM UI TO UI	1
8076179	CABLE, COMM CROSSOVER 25"	1
8198099	CFA UX A7 REAR UI ADD ON INST.	1

Reboot the unit, power off the unit (see Figure 5).

7. Disconnect power from the unit and move to another location if necessary.

8. Remove the four (4) screws that secure the top of the cabinet (see Figure 6).

9. Lift and remove the top of the cabinet (see Figure 7).

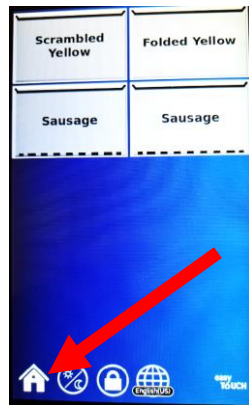


Figure 1



Figure 2

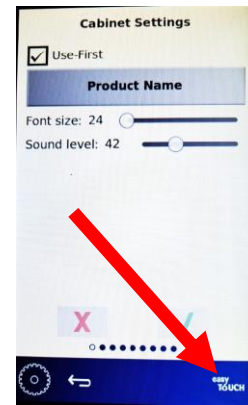


Figure 3



Figure 4

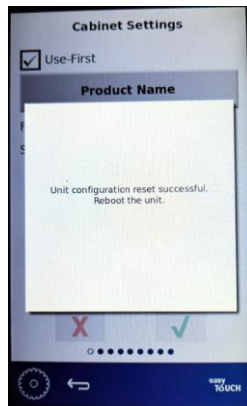


Figure 5



Figure 6



Figure 7

10. Remove the right side of the cabinet, as viewed from the front of the cabinet by sliding the side up (see Figure 8).



Figure 8



Figure 9

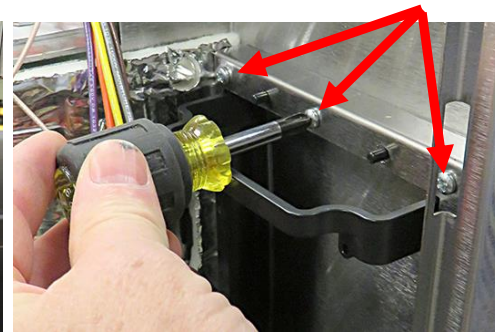


Figure 10

11. Remove the six (6) screws (3 on top and 3 on bottom) attaching the

blank plate assembly (see Figures 9 and 10). Save the screws to attach the new controller.

12. Remove and scrap the blank plate and retainer (see Figures 11 & 12).



Figure 11



Figure 12

13. Place the new controller on a flat surface in another area of the restaurant to insert the new SD card (see Figure 13).

14. Gently lift the rubber cover on the rear of the controller and rotate gently to one side to access the SD card slot reader (see Figures 14 & 15).



Figure 13

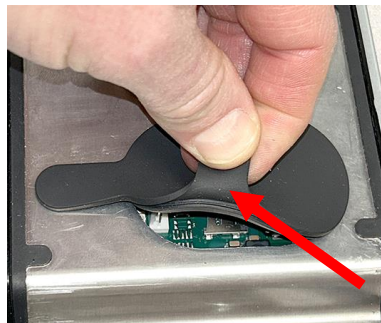


Figure 14

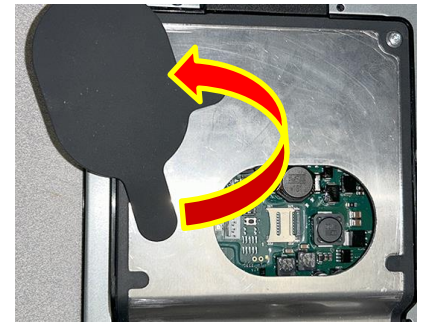


Figure 15

15. Gently slide the lock towards the **RIGHT** as shown arrow towards the gray plastic edge until the top retainer stops (see Figure 16).

16. Gently lift the lock and flip all the way open (see Figures 17 & 18).

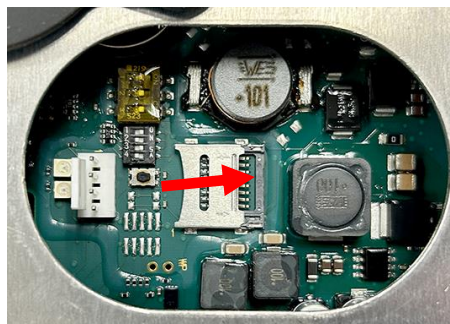


Figure 16

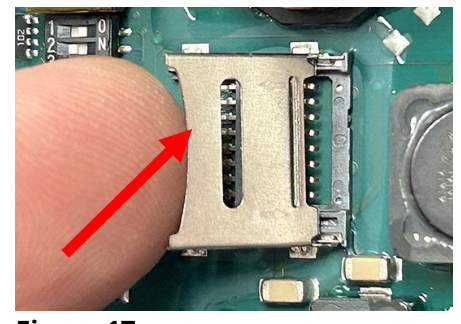


Figure 17

17. Carefully insert the SD card into the slot, with the contacts facing down as shown. The tab should fit into the notch on the side of the SD card (see Figure 19).

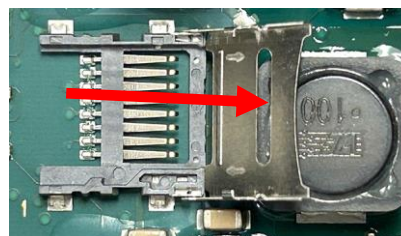


Figure 18



Figure 19

18. Gently lower the lock and slide towards the **LEFT as shown** until it stops (see Figure 20). The SD card should be flush with the front of the SD card holder.
19. Rotate the rubber cover back over the opening and secure it to the metal work (see Figure 21).

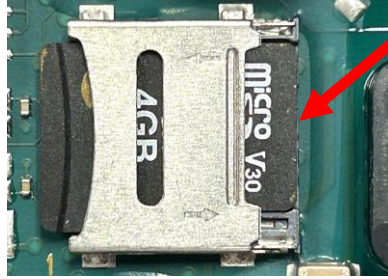


Figure 20



Figure 21

20. Insert the controller wire harnesses through the cabinet opening through the metal retaining bracket as shown (see Figure 22) as seen from inside the cabinet.

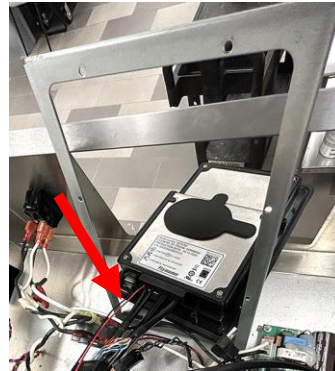


Figure 22

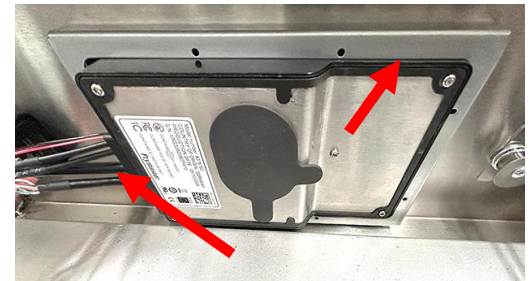


Figure 23

21. Rotate the bracket and controller so that they sandwich the cabinet frame between them as shown, with the wire harnesses positioned as shown (see Figure 23). If the controller is vertically mounted, the harnesses of the controller face towards the top of the cabinet.



Figure 24



Figure 25

22. Using the eight (8) supplied screws, attach the metal frame to the controller with a #10 torx driver (see Figure 24). Torque carefully to 6 lbs to avoid breaking plastic of the controller. **DO NOT OVER TIGHTEN the screws.**

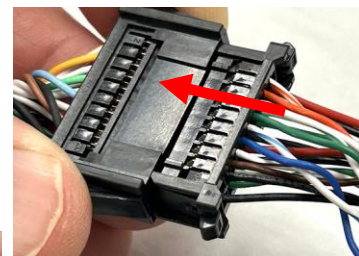


Figure 26

23. Attach 130296322 20-pin harness connector (Figure 25) to the 20-pin Figure 26).

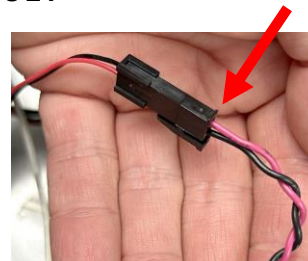


Figure 27

24. Connect the 2-wire red and black with the two (2) USB and ethernet connector of the controller (see speaker wire (see Figure 27).

25. Connect the two (2) USB extensions to the harness connected in step 20 (see Figure 28).
26. **DO NOT CONNECT ANY CABLE TO THE ETHERNET CONNECTION IN FIGURE 28 or 29! (see Figure 29). Plugging an IO board harness into this port can permanently damage the controller.**

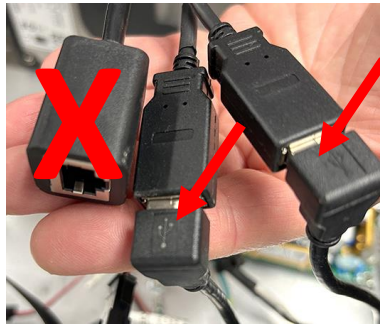


Figure 28



Figure 29

27. Connect the 8076535-coupler harness (see Figure 30) 12-pin connector to 12-pin connector on the controller (see Figure 31).
28. Connect the 8076535-coupler 6-pin CANBUS connector to the 6-pin CANBUS harness from the other controller (see Figure 32).



Figure 30



Figure 31

29. Connect the 8076535-coupler two (2) wire 4-pin power cable connector (gray & white) to the two (2) wire (black & red) 4-pin power harness (see Figure 33).

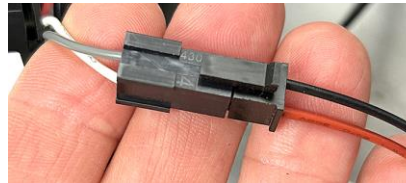


Figure 33

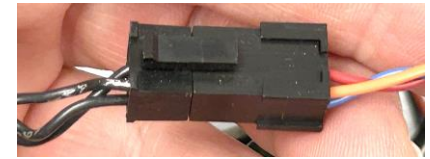




Figure 32

30. Connect the 8076535-coupler RJ (ethernet) connector to the RJ (ethernet) cable from the IO board (see Figure 34).



Figure 34

31. Reconnect power and turn on the power switch.
32. If the new controller powers up and fully boots, go to step 34. If the new controller **DOES NOT** boot up, check to ensure the SD card is correctly inserted.

33. Once the cabinet is powered up and fully booted up, check the software versions on **BOTH** controllers by pressing the  button. Press the  button. Swipe two times to the right to **System Information**. Verify the UI software versions **MATCHES one of the versions above on BOTH controllers**.

Firmware Versions

Board	Version
UI (Primary)	A7-3004 or UX2583
I/O board	0.7.5

Figure 35

The latest controller software version for the older style controller is **UX-2583**. The latest controller software version for the newer style controller is **A7-3004**. The IO software version should be **0.7.5** (see Figure 35). Ensure **Primary** is displayed on the **FRONT** controller and **Secondary** on the **REAR** controller.

34. Press the  button.

Press

35. Press the  button.

36. Check all connections to ensure that the connections are secure.

37. Reattach the top and return the cabinet to service.

- 38. It may be necessary to enter the serial # and model # from the rating plate (see Figure 36).
- 39. It may be necessary to reassign locations of products, add new products, load menus, change settings, etc. before leaving the location. Check with store manager for any special products. See enclosed manual for details.

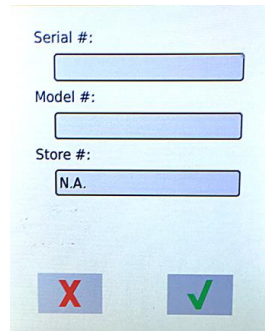


Figure 36

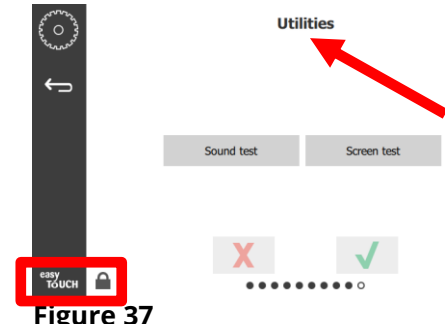


Figure 37

- 40. If the configuration needs to be reset follow these steps:

41. Press the button. Press the button. Swipe to the left to **Utilities**.

42. Press and hold the easyTouch logo in the lower right corner for 10 seconds. The controller displays Reset Configuration. Press the GREEN checkmark button. (see Figure 37).

43. Power cycle the cabinet.

44. Reattach the side and top of the cabinet.

45. Reconnect power to the unit and power on the unit.

46. After the cabinet boots up, the controller displays the orientation screen (see Figure 38). Select the arrow which matches the orientation of the screen.

47. The controller displays the model # configuration screen (see Figure 39).

48. Press the down arrow (see Figure 39) and select the correct configuration for the cabinet configuration (see Figure 40). The first number is the # of vertical slots. The second number is the # of trays horizontally. If the controller is horizontal, use the model number with on the third character from the right. The next to the last character has for single sided and a "2" for double sided. Once the model is selected, the **Config** button if a double-sided unit. For single sided units, once model is selected, proceed to step 50.

49. On double sided units select controller location: **Front** or **Back** (see Figure 41) or **Left** or **Right** on 5x4 units.

Orientation
Which way is up on the touchscreen?



Figure 38

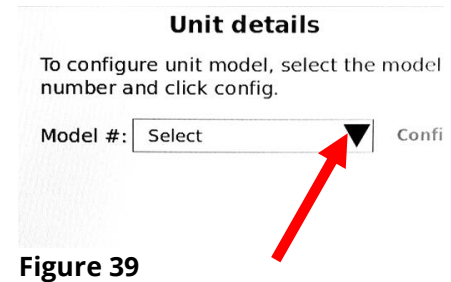


Figure 39

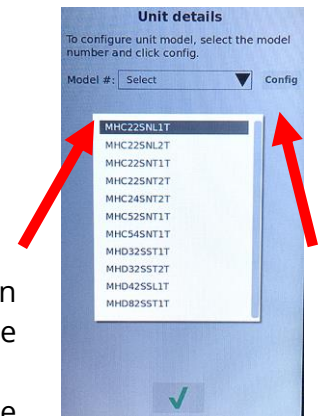


Figure 40

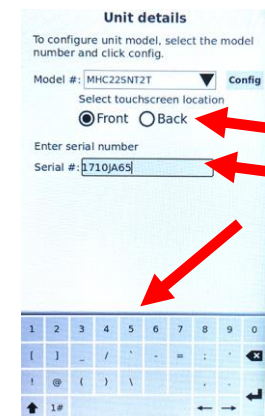


Figure 41

an "L"
a "1"
press the

50. Press the Serial # field and use the keyboard to enter the serial number of the cabinet. It is critical that the Cabinet Information including the Serial # and the Model # **ALL** be entered into these fields (see Figure 41). If any information is missing or incorrect in any of these fields, the cabinets will not communicate with other cabinets. When finished, press the return key (see Figure 41) and the GREEN checkmark button (see Figure 42).

51. The controller displays “**Save selected configuration?**” Press the green checkmark button to continue (see Figure 43). If another display on the cabinet needs to be configured, repeat steps 41-51 on that display.

52. The controller displays “**Unit configuration successful. Reboot the unit.**” (see Figure 44). Power cycle the cabinet by switching OFF the power switch for five (5) seconds and switching back on.

53. Once the cabinet is fully rebooted, the main screen is displayed (see Figure 45).

54. Press the tools icon (gear) from the home screen (see Figure 46).

55. Swipe two (2) times towards the right. The System Information is displayed (see Figure 47).

56. It is critical that the Cabinet Information including the Serial #, the Model # and the Store # **ALL** be entered into these fields (see Figure 47). If any information is missing or incorrect in any of these fields,

the cabinets will not communicate with other cabinets.

57. To enter the information in the fields press the lock icon in the lower left corner of the display (see Figure 48).

58. Enter code **159357** and press the GREEN checkmark button (see Figure 49).

59. The lock icon will change to unlocked.

60. Press the area with the missing information and the Serial #, Model # and Store # are displayed (see Figure 50).

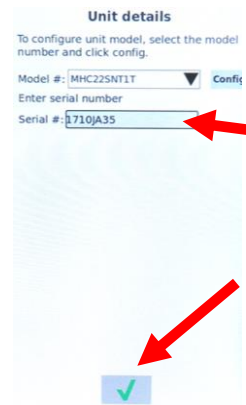


Figure 42

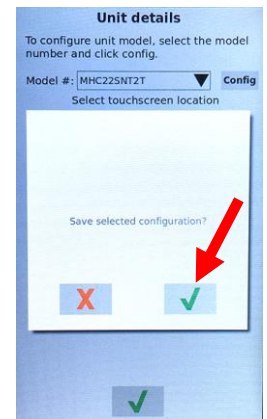


Figure 43

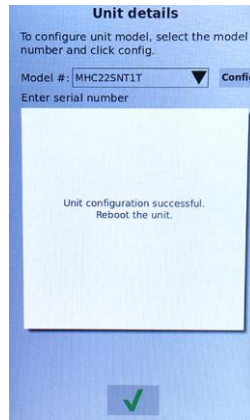


Figure 44



Figure 45



Figure 46

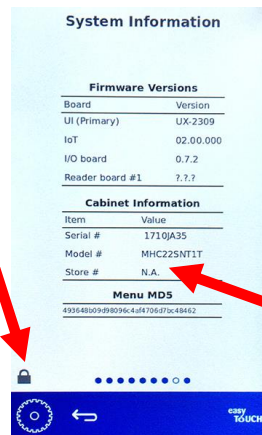


Figure 47



Figure 48

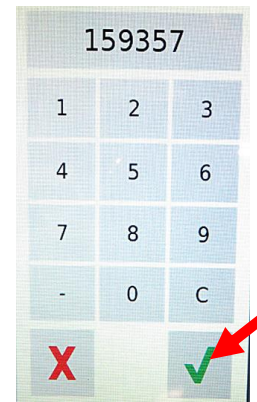


Figure 49

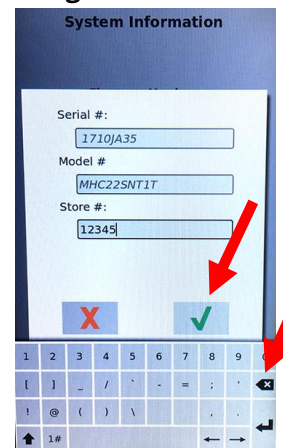


Figure 50

61. Press on the desired field to edit. Use the keypad to enter the information. When finished, press the return key.

62. Repeat for each field of data.

63. When finished entering the data, press the GREEN checkmark button (see Figure 51).



Figure 51



Figure 52

Press
&Go

Figure 53

64. Press the "return" arrow to return to the home screen (see Figure 52).

65. Press the Press & Go button to view the products (see Figure 53).

66. **Test-100** is displayed.

67. Press Home button (see Figure 54).



Figure 54



Figure 55

68. Press the USB button (see Figure 55).

69. Press the lock icon in the lower left corner (see Figure 56).



Figure 56

70. Enter code **159357** and press the GREEN checkmark button (see Figure 57).

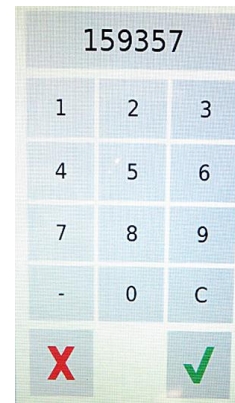


Figure 57

71. The lock icon will change to unlocked.

72. Press and hold the clockwise arrow for two (2) seconds (see Figure 58).



Figure 58

73. The menu configurations are shown (see Figure 59).

74. Select the cabinet type (see Figure 59). Ensure that 2x2-2 NonCL.vhc or similar **-2** configuration is chosen.

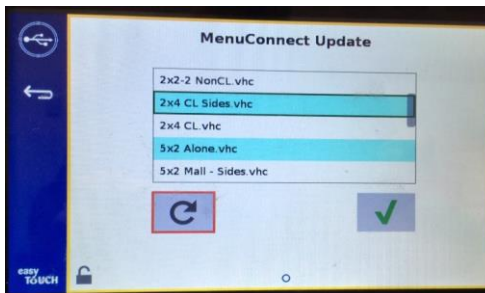


Figure 59



Figure 60

75. Press the check button (see Figure 60).

76. MenuConnect file imported is displayed (see Figure 61).

77. Press the **Close** button.

78. Press the unlock button (see Figure 62).

79. Press the "return" arrow to return to the home screen (see Figure 63).

80. Press the Press & Go button to view the products (see Figure 64).



Figure 61



Figure 62



Figure 63

Press
&Go

Figure 64

81. The normal products are displayed.

82. Additional Steps are listed below if **individual** menu items need removed from the screen, otherwise skip to step 83.

a. Press the Home button.

b. Press Open Book (Library).

c. Press the Day Part button. The current menu layout is displayed.

- d. Press the menu item for two (2 seconds) that needs removed.
 - e. Press confirm remove.
 - f. Press the empty box (library is displayed) and select the menu desired.
 - g. Press the Return Arrow.
 - h. Press the Press & Go button.
83. Power cycle the cabinet by switching OFF the power switch for five (5) seconds and switching back on.
84. If any model configuration was entered incorrectly, follow steps 54-71. Press and hold the easyTouch logo in the lower right corner for 10 seconds. The controller displays Reset Configuration. Press the GREEN checkmark button. Repeat steps 46-83.